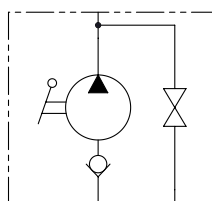




LA POMPA VIENE FORNITA CON GUARNIZIONE SAGOMATA
+ VITI DI FISSAGGIO + LEVA DI AZIONAMENTO L=600 mm
LA MANDATA LA SI OTTIENE SOLAMENTE AZIONANDO LA LEVA VERSO IL BASSO

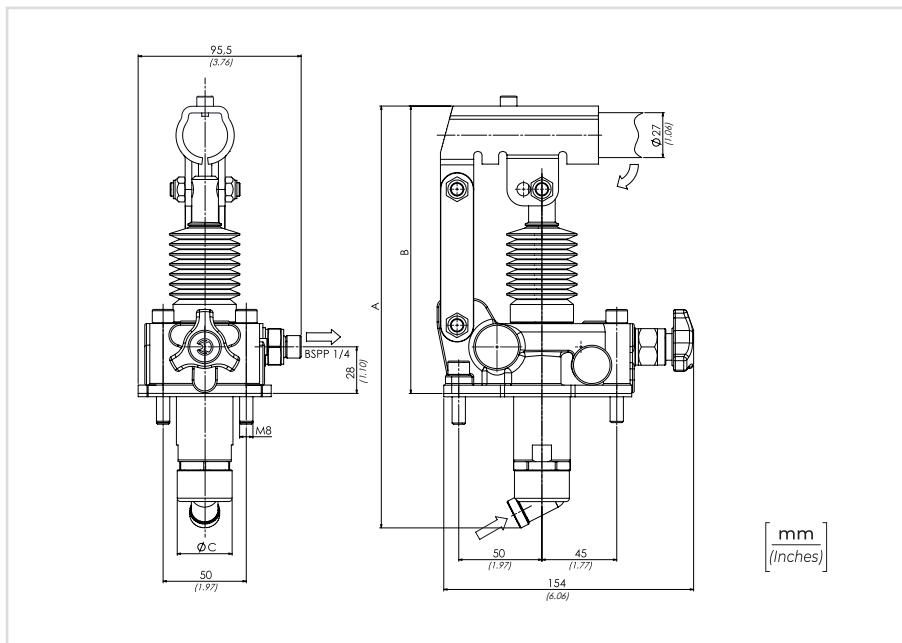
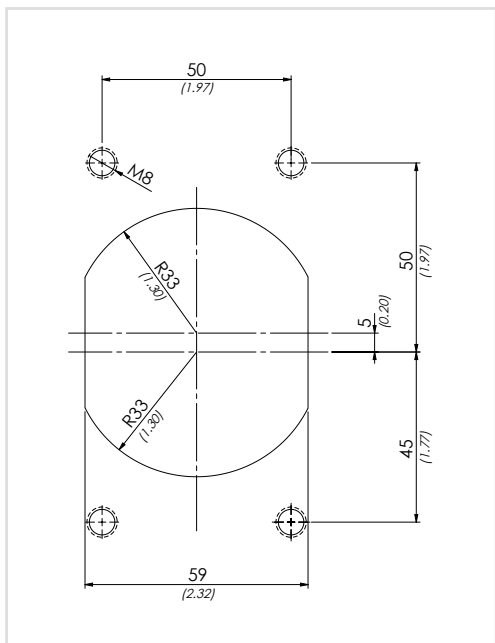
THE PUMP IS SUPPLIED WITH SHAPED SEAL,
FIXING SCREWS AND ACTING LEVER 23,6 inch LONG.
OIL FLOW LEVER ACTION DOWNWARDS ONLY

SCHEMA IDRAULICO / HYDRAULIC CIRCUIT



	01	02	03	04
CODICE ORDINAZIONE ORDERING CODE	PME2			

01	POMPA A MANO SINGOLO POMPAGGIO VERSO IL BASSO PER CILINDRO A SEMPLICE EFFETTO SINGLE DOWNWARD PUMPING HAND PUMP FOR SINGLE ACTING CYLINDER			PME2	
02	CILINDRATA DISPLACEMENT	mm - inch			
		A	B	C	
	20 cm ³ (1.22 in ³)	249 (9.80)	167 (6.57)	34 (1.33)	20
02	30 cm ³ (1.83 in ³)	252 (9.92)	167 (6.57)	34 (1.33)	30
	40 cm ³ (2.44 in ³)	252 (9.92)	167 (6.57)	40 (1.57)	40
03	OPTIONAL	Senza soffietto - Without rubber protection			
		Con soffietto - With rubber protection			P
04	OPTIONAL	Senza rubinetto di scarico con valvola di massima Without unloading valve With relief valves			WRV
		Senza rubinetto di scarico Without unloading valve			W
		Con leva di scarico - With unloading lever			L
		Con valvola di massima pressione With relief valves			RV
		Con leva di scarico e valvola di massima pressione With unloading lever and relief valves			LRV



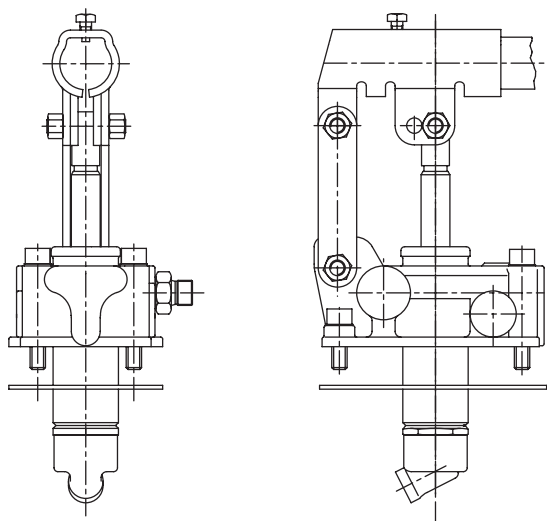
DATI TECNICI / TECHNICAL DATA

Olio idraulico - Mineral oil	ISO 6743/4 (DIN 51524)		
Viscosità olio - Oil viscosity	15-250 mm ² /s (15 to 250 cSt)		
Classe di contaminazione max Max contamination index	ISO 4406:1999 Classe 19/17/14		
Temperatura dell'olio - Oil temperature	-20°C	+80°C	-4°F +176°F
Temperatura ambiente - Environment temperature	-20°C	+50°C	-4°F +122°F
È indispensabile la presenza di un filtro nel circuito idraulico per proteggere la valvola (filtrazione consigliata 15 µm) A filter into the hydraulic circuit necessary to protect the valve (advised filtration 15 µm)			

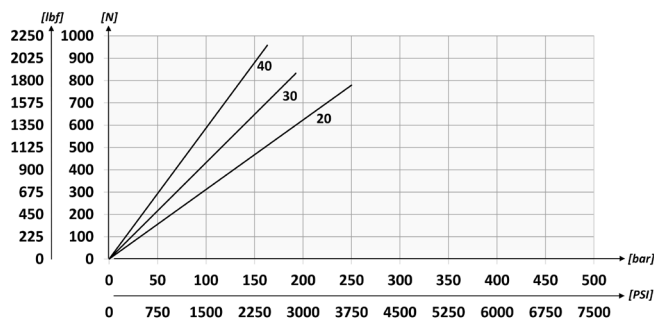
CARATTERISTICHE TECNICHE / TECHNICAL CHARACTERISTICS

TIPO TYPE	PRESSIONE OTTIMALE OPTIMAL PRESSURE bar-PSI	PRESSIONE MAX MAX PRESSURE bar-PSI	PESO APPROX APPROX WEIGHT kg-lbt
PME220	80 (1160)	240 (3480)	4,2 (9.2)
PME230	60 (870)	185 (2683)	
PME240	40 (580)	160 (2320)	

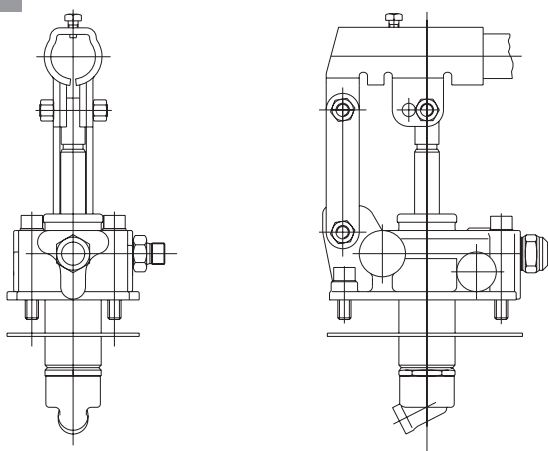
W



SFORZO ESERCITATO ALL'ESTREMITÀ DELLA LEVA
EFFORT OPERATING AT THE END OF THE LEVER

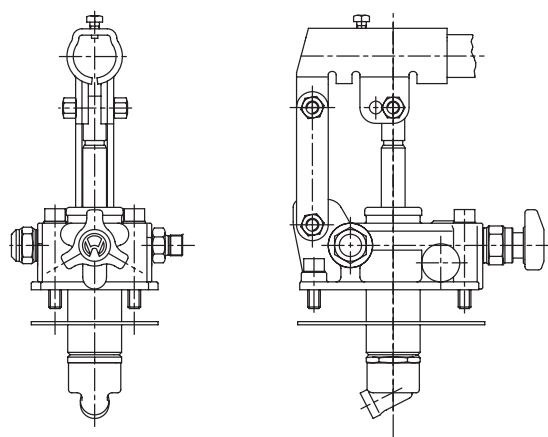


WRV



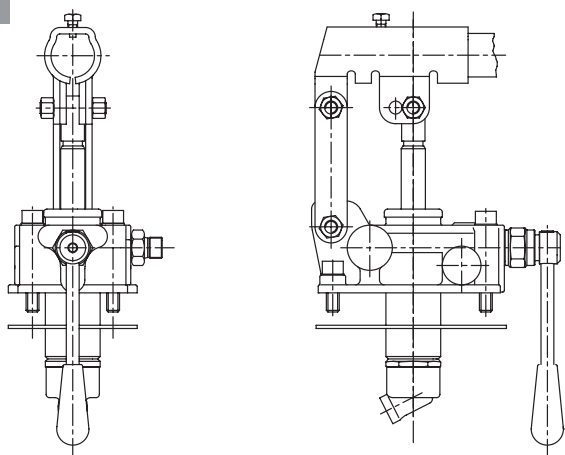
Valvola di massima Relief valve
Molla 40/350 bar Spring 580/5075 PSI
Taratura Standard 100 bar Standard Setting 1450 PSI

RV

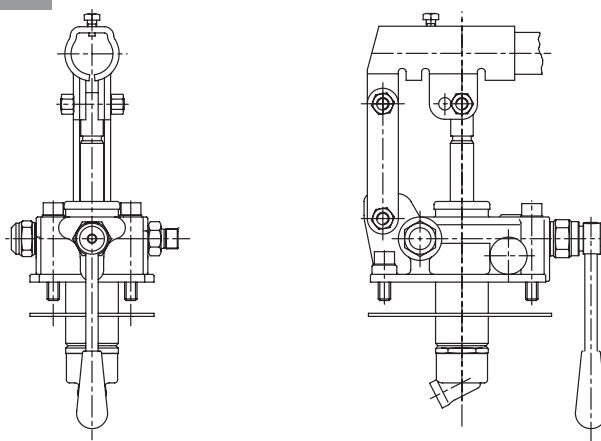


Valvola di massima Relief valve
Molla 40/350 bar Spring 580/5075 PSI
Taratura Standard 100 bar Standard Setting 1450 PSI

L



LRV



Valvola di massima Relief valve
Molla 40/350 bar Spring 580/5075 PSI
Taratura Standard 100 bar Standard Setting 1450 PSI