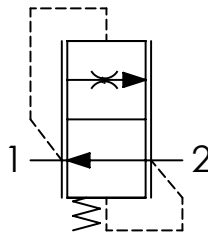


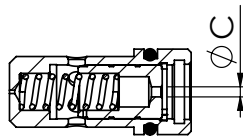


SCHEMA IDRAULICO / HYDRAULIC CIRCUIT



DATI TECNICI / TECHNICAL DATA

Olio idraulico - Mineral oil	ISO 6743/4 (DIN 51524)
Viscosità olio - Oil viscosity	15-250 mm²/s (15 to 250 cSt)
Classe di contaminazione max Max contamination index	ISO 4406:1999 Classe 19/17/14
Temperatura dell'olio - Oil temperature	-20°C +80°C -4°F +176°F
Temperatura ambiente - Ambient temperature	-20°C +50°C -4°F +122°F
È indispensabile l'utilizzo di un filtro per proteggere la valvola (filtrazione consigliata 15 µm) It is necessary a filter use to protect the valve (advised filtration 15 µm)	

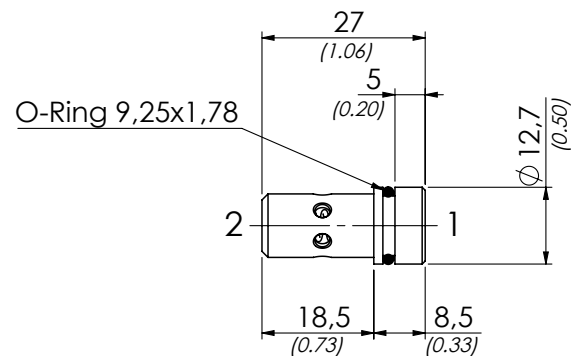


TIPO (TYPE)	Ø C
VSCR61	1 (0.04)
VSCR62	1,2 (0.05)
VSCR63	1,5 (0.06)
VSCR64	1,7 (0.07)
VSCR65	1,9 (0.07)
VSCR66	2,1 (0.08)
VSCR67	2,3 (0.09)
VSCR68	2,4 (0.09)
VSCR69	2,7 (0.11)
VSCR610	2,8 (0.11)
VSCR611	3,1 (0.12)
VSCR612	3,3 (0.13)

CODICE ORDINAZIONE ORDERING CODE

01	02
VSCR6	

01	VALVOLE CONTROLLO DISCESA FISSE COMPENSATE (FIXED FLOW CONTROL VALVES - PRESSURE COMPENSATED)	VSCR6
02	PORTATA CONTROLLATA A 100 BAR ± 10% (CONTROLLED FLOW AT 100 BAR ± 10%)	1 l/min (0.26 USgpm) 1
		2 l/min (0.53 USgpm) 2
		3 l/min (0.79 USgpm) 3
		4 l/min (1.06 USgpm) 4
		5 l/min (1.32 USgpm) 5
		6 l/min (1.58 USgpm) 6
		7 l/min (1.85 USgpm) 7
		8 l/min (2.11 USgpm) 8
		9 l/min (2.38 USgpm) 9
		10 l/min (2.64 USgpm) 10
		11 l/min (2.90 USgpm) 11
		12 l/min (3.17 USgpm) 12



[mm]
[Inches]

TIPO TYPE	PORTATA MAX MAX FLOW l/min-USgpm	PRESSIONE MAX MAX PRESSURE bar-PSI	PESO APPROX APPROX WEIGHT kg-lbt
VSCR6	12 (3.20)	250 (3625)	0,012 (0.026)