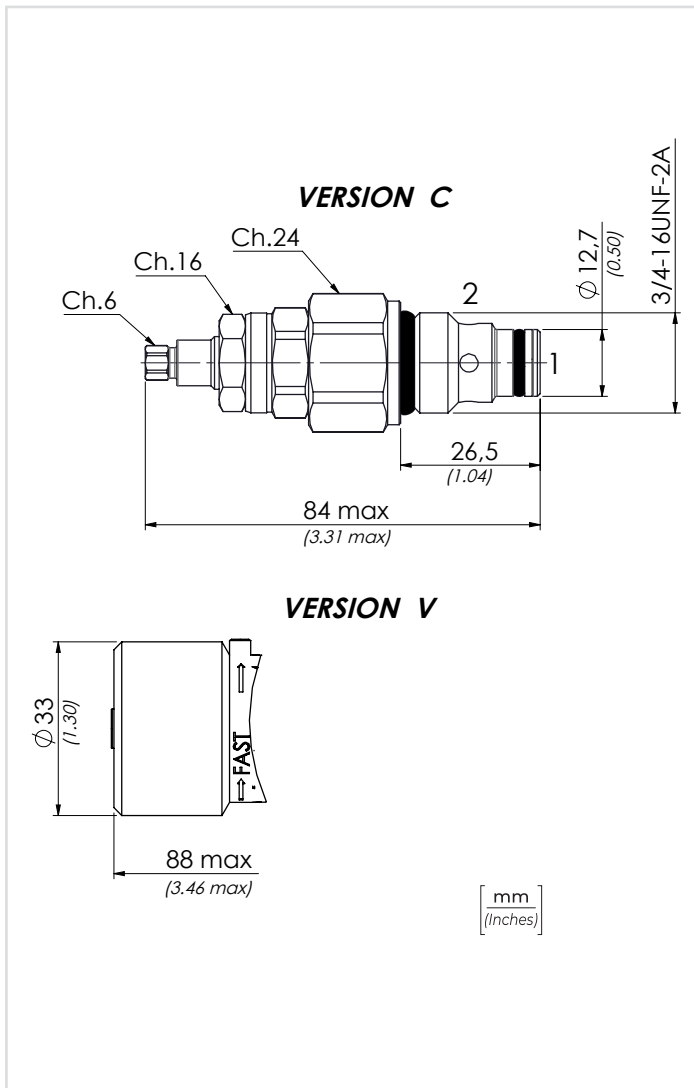
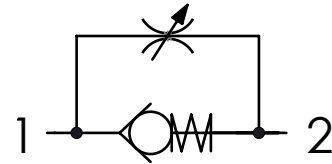




	01	02
<b>CODICE ORDINAZIONE</b> ORDERING CODE	<b>VRF6</b>	

<b>01</b>	VALVOLE CONTROLLO FLUSSO UNIDIREZIONALI SAE 8 (SAE 8 UNIDIRECTIONAL FLOW CONTROL VALVES)	<b>VRF6</b>
<b>02</b>	CHIAVE (SCREW)	<b>C</b>
	Volantino (Handknob) Tipo (Type) 12000275	<b>V</b>

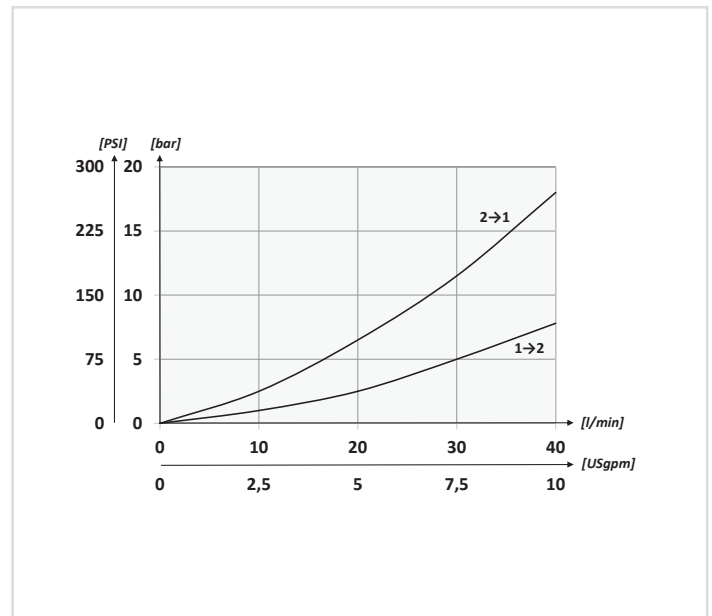
**SCHEMA IDRAULICO / HYDRAULIC CIRCUIT**



**DATI TECNICI / TECHNICAL DATA**

<b>Olio idraulico</b> - Mineral oil	<b>ISO 6743/4</b> (DIN 51524)
<b>Viscosità olio</b> - Oil viscosity	<b>15-250 mm<sup>2</sup>/s</b> (15 to 250 cSt)
<b>Classe di contaminazione max</b> Max contamination index	<b>ISO 4406:1999 Classe 19/17/14</b>
<b>Temperatura dell'olio</b> - Oil temperature	<b>-20°C +80°C</b> -4°F + 176°F
<b>Temperatura ambiente</b> - Environment temperature	<b>-20°C +50°C</b> -4°F + 122°F
È indispensabile l'utilizzo di un filtro per proteggere la valvola (filtrazione consigliata 15 µm) It is necessary a filter use to protect the valve (advised filtration 15 µm)	

**PERFORMANCES**



**CARATTERISTICHE TECNICHE / TECHNICAL CHARACTERISTICS**

TIPO TYPE	PORTATA MAX (l/min) MAX FLOW (USgpm)	PRESSIONE MAX (bar) MAX PRESSURE (PSI)	PESO APPROX (kg) APPROX WEIGHT (lbt)	COPPIA DI SERRAGGIO TIGHTENING TORQUE Nm-lbt ft	CAVITÀ CAVITY
<b>VRF6</b>	<b>40</b> (10.6)	<b>350</b> (5075)	<b>0,13</b> (0.30)	<b>25-30</b> (19-22)	<b>SAE8/2</b>