



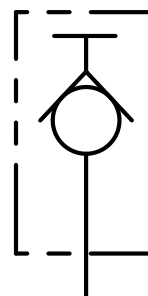
	01	02
<b>CODICE ORDINAZIONE</b> ORDERING CODE	<b>MNP</b>	

<b>01</b>	MINIPRESE PROVA PRESSIONE (TEST COUPLINGS FOR PRESSURE CHECKING)	<b>MNP</b>
<b>02</b>	DIMENSIONE (SIZE)	BSPP 1/8
		BSPP 1/4
		BSPP 3/8
		BSPP 1/2

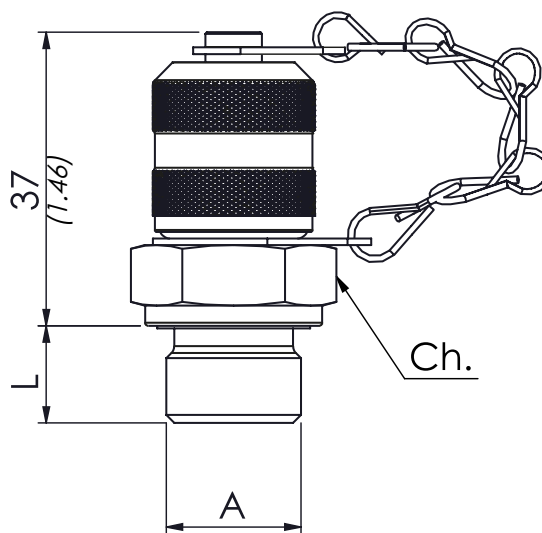
### DATI TECNICI / TECHNICAL DATA

Olio idraulico - Mineral oil	ISO 6743/4 (DIN 51524)
Viscosità olio - Oil viscosity	15-250 mm <sup>2</sup> /s (15 to 250 cSt)
Classe di contaminazione max Max contamination index	ISO 4406:1999 Classe 19/17/14
Temperatura dell'olio - Oil temperature	-20°C +80°C    -4°F +176°F
Temperatura ambiente - Environment temperature	-20°C +50°C    -4°F +122°F
È indispensabile l'utilizzo di un filtro per proteggere la valvola (filtrazione consigliata 15 µm) It is necessary a filter use to protect the valve (advised filtration 15 µm)	

### SCHEMA IDRAULICO / HYDRAULIC CIRCUIT



## MINIPRESE TEST COUPLINGS M16X2



mm  
(Inches)

### CARATTERISTICHE TECNICHE / TECHNICAL CHARACTERISTICS

TIPO TYPE	A	PRESSIONE MAX MAX PRESSURE bar-PSI	Ch. mm	L	COPPIA DI SERRAGGIO TIGHTENING TORQUE Nm-lbt ft	PESO APPROX (kg) APPROX WEIGHT (lbt)
MNP180	BSPP 1/8	630 (9135)	17	8 (0.31)	20 (14.6)	0,07 (0.16)
MNP140	BSPP 1/4		19	12 (0.47)	30 (22)	0,08 (0.18)
MNP380	BSPP 3/8		22	12 (0.47)	60 (44)	0,10 (0.22)
MNP120	BSPP 1/2		27	14 (0.55)	80 (58.6)	0,13 (0.29)