

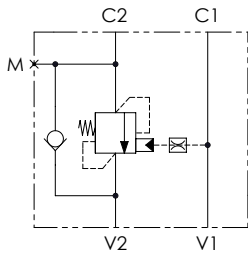


**CODICE ORDINAZIONE**  
ORDERING CODE

01	02	03	04
<b>VBZP</b>		<b>2</b>	

<b>01</b>	VALVOLE DI BILANCIAMENTO SINGOLE PER CENTRO APERTO A TARATURA FISSA (SINGLE COUNTERBALANCE VALVES FIXED SETTING FOR OPEN CENTER)		<b>VBZP</b>
<b>02</b>	DIMENSIONE (SIZE)	BSPP 3/8	<b>380</b>
		BSPP 1/2	<b>120</b>
<b>03</b>	Taratura (Setting) <b>Q=5 l/min 350 bar (5075 PSI)</b>		<b>2</b>
<b>04</b>	MATERIALE (MATERIAL)	Acciaio + zincatura (Steel + zinc-plating)	<b>S</b>
		Acciaio + zinco-nichel (Steel + zinc-nickel)	<b>K</b>
Rapporto di pilotaggio (Pilot ratio) 1:4.25			

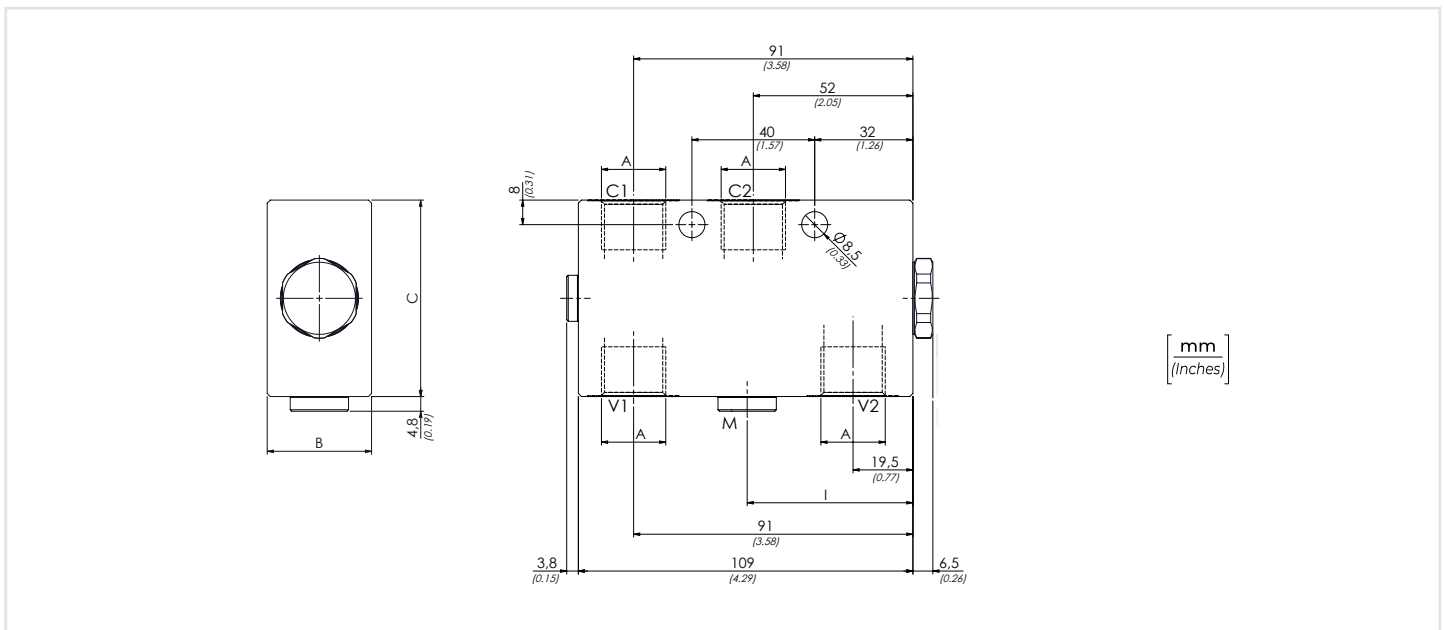
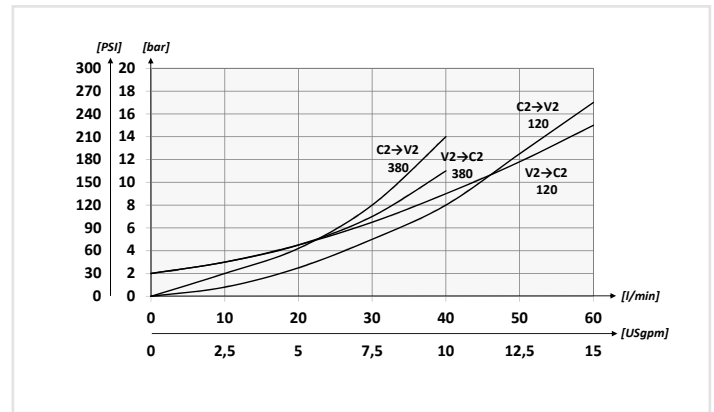
**SCHEMA IDRAULICO / HYDRAULIC CIRCUIT**



**DATI TECNICI / TECHNICAL DATA**

<b>Olio idraulico</b> - Mineral oil	ISO 6743/4 (DIN 51524)		
<b>Viscosità olio</b> - Oil viscosity	15-250 mm <sup>2</sup> /s (15 to 250 cSt)		
<b>Classe di contaminazione max con filtro</b> Max contamination index with filter	ISO 4406:1999 Classe 19/17/14		
<b>Temperatura dell'olio</b> - Oil temperature	-20°C +80°C	-4°F +176°F	
<b>Temperatura ambiente</b> - Environment temperature	-20°C +50°C	-4°F +122°F	
È indispensabile l'utilizzo di un filtro per proteggere la valvola (filtrazione consigliata 15 µm) It is necessary a filter use to protect the valve (advised filtration 15 µm)			

**PERFORMANCES**



**CARATTERISTICHE TECNICHE / TECHNICAL CHARACTERISTICS**

TIPO TYPE	A	PORTATA MAX (l/min) MAX FLOW (USgpm)	PRESSIONE MAX (bar) MAX PRESSURE (PSI)	B	C	I	M	PESO APPROX (kg) APPROX WEIGHT (lbt)
<b>VBZP380</b>	<b>BSPP 3/8</b>	<b>40 (10.6)</b>	<b>350 (5075)</b>	<b>29 (1.14)</b>	<b>54 (2.13)</b>	/	/	<b>1,14 (2.50)</b>
<b>VBZP120</b>	<b>BSPP 1/2</b>	<b>60 (15.9)</b>		<b>34 (1.34)</b>	<b>64 (2.52)</b>	<b>54 (2.13)</b>	<b>BSPP 1/4</b>	<b>1,52 (3.34)</b>