

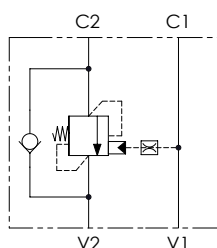


CODICE ORDINAZIONE
ORDERING CODE

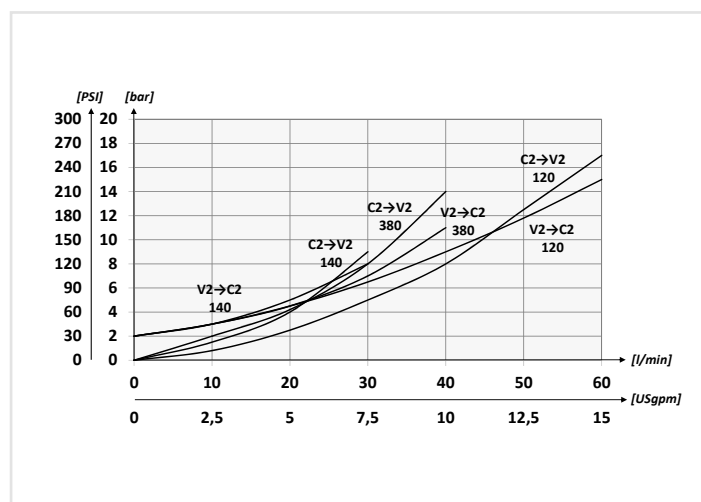
01	02	03	04
VBZL		2	

01	VALVOLE DI BILANCIAMENTO SINGOLE PER CENTRO APERTO A TARATURA FISSA (SINGLE COUNTERBALANCE VALVES FIXED SETTING FOR OPEN CENTER)			VBZL
02	DIMENSIONE (SIZE)	BSPP 1/4		140
		BSPP 3/8		380
		BSPP 1/2		120
05	Taratura (Setting) Q=5 l/min 350 bar (5075 PSI)			2
04	MATERIALE (MATERIAL)	Acciaio + zincatura (Steel + zinc-plating)		S
		Acciaio + zinco-nichel (Steel + zinc-nickel)		K
Rapporto di pilotaggio (Pilot ratio) 1:4.25				

SCHEMA IDRAULICO / HYDRAULIC CIRCUIT

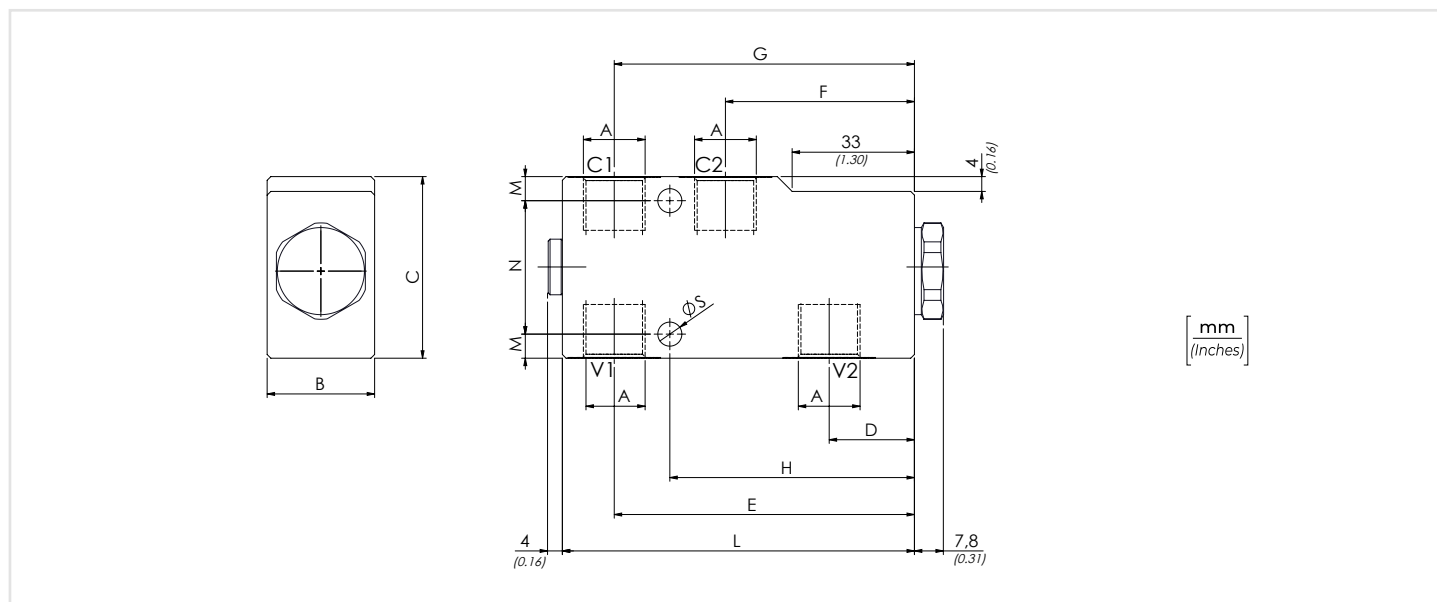


PERFORMANCES



DATI TECNICI / TECHNICAL DATA

Olio idraulico - Mineral oil	ISO 6743/4 (DIN 51524)		
Viscosità olio - Oil viscosity	15-250 mm ² /s (15 to 250 cSt)		
Classe di contaminazione max con filtro Max contamination index with filter	ISO 4406:1999 Classe 19/17/14		
Temperatura dell'olio - Oil temperature	-20°C +80°C	-4°F +176°F	
Temperatura ambiente - Environment temperature	-20°C +50°C	-4°F +122°F	
È indispensabile l'utilizzo di un filtro per proteggere la valvola (filtrazione consigliata 15 µm) It is necessary a filter use to protect the valve (advised filtration 15 µm)			



CARATTERISTICHE TECNICHE / TECHNICAL CHARACTERISTICS

TIPO TYPE	A	PORTATA MAX MAX FLOW l/min-USgpm	PRESSIONE MAX MAX PRESSURE bar-PSI	B	C	D	E	F	G	H	L	M	N	S	PESO APPROX (kg) APPROX WEIGHT (lbt)
VBZL140	BSPP 1/4	30 (7.9)	350 (5075)	29 (1.14)	49 (1.93)	23 (0.91)	81 (3.19)	51 (2.01)	81 (3.19)	66 (2.60)	95 (3.74)	6,5 (0.26)	36 (1.42)	6,5 (0.26)	0,91 (2.00)
VBZL380	BSPP 3/8	40 (10.6)			59 (2.32)	21 (0.83)	84 (3.30)		84 (3.31)	67,5 (2.66)	100 (3.94)	9,5 (0.37)	40 (1.57)		1,02 (2.24)
VBZL120	BSPP 1/2	60 (15.9)													