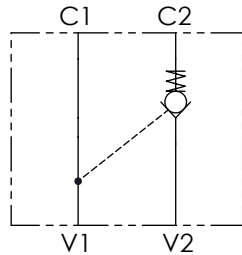


### CODICE ORDINAZIONE / ORDERING CODE

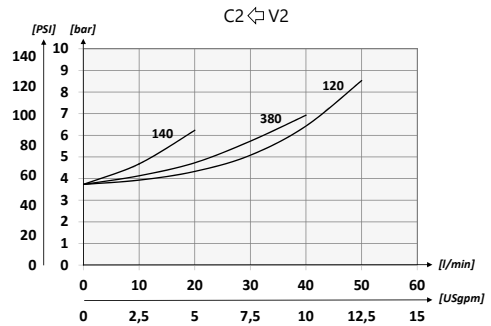
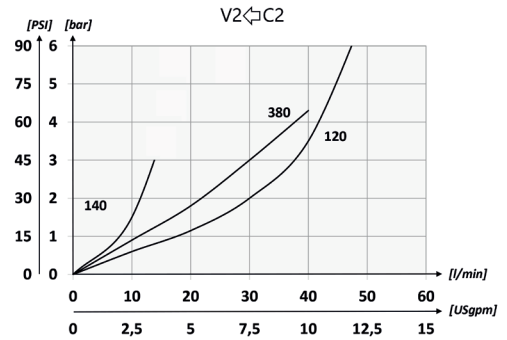
01	02	03
<b>VRSD</b>		

<b>01</b>	VALVOLE DI BLOCCO A SEMPLICE EFFETTO DIN2353 (DIN2353 SINGLE ACTING PILOT CHECK VALVES)	<b>VRSD</b>
<b>02</b>	DIMENSIONE / SIZE	BSPP 1/4
		BSPP 3/8
		BSPP 1/2
<b>03</b>	DIMENSIONE TUBO / SIZE PIPE	Per tubo Ø 8 - For Ø 8 pipe only for BSPP 1/4
		Per tubo Ø 12 - For Ø 12 pipe standard only for BSPP 1/4 and 3/8
		Per tubo Ø 15 - For Ø 15 pipe standard only for BSPP 1/2

### SCHEMA IDRAULICO / HYDRAULIC CIRCUIT

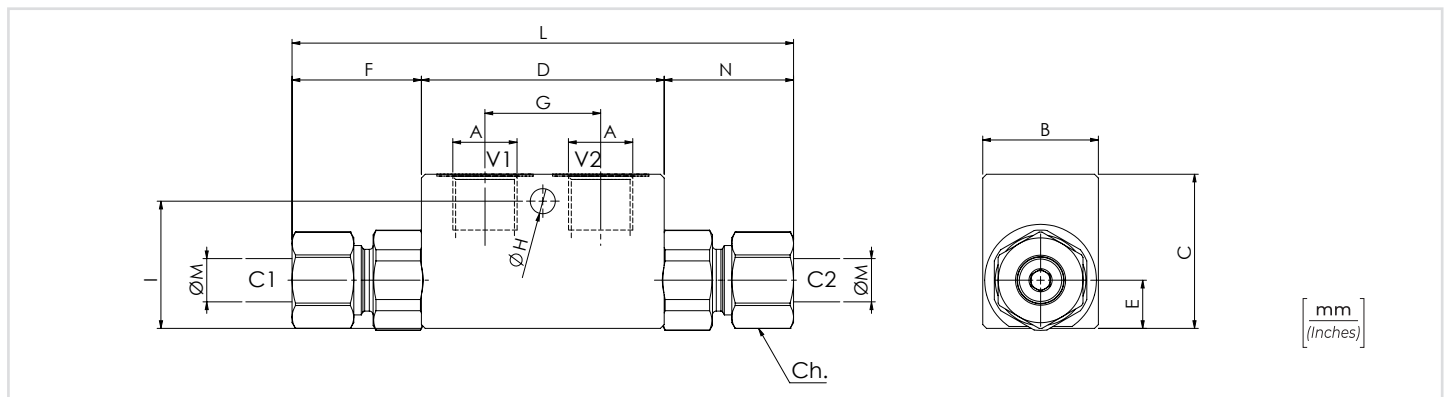


### PERFORMANCES



### DATI TECNICI / TECHNICAL DATA

Olivo idraulico - Mineral oil	ISO 6743/4 (DIN 51524)
Viscosità olio - Oil viscosity	15-250 mm <sup>2</sup> /s (15 to 250 cSt)
Classe di contaminazione max / Max contamination index	ISO 4406:1999 Classe 19/17/14
Temperatura dell'olio - Oil temperature	-20°C +80°C -4°F +176°F
Temperatura ambiente - Environment temperature	-20°C +50°C -4°F +122°F
È indispensabile la presenza di un filtro nel circuito idraulico per proteggere la valvola (filtrazione consigliata 15 µm)	
A filter into the hydraulic circuit necessary to protect the valve (advised filtration 15 µm)	
Trafilamento massimo / Max leakage	0,25 cm <sup>3</sup> /min - 5 gocce/min / 0,015 in <sup>3</sup> /min - 5 drops/min



### CARATTERISTICHE TECNICHE / TECHNICAL CHARACTERISTICS

TIPO / TYPE	A	PORTATA MAX / MAX FLOW l/min-USgpm	PRESSIONE MAX / MAX PRESSURE bar-PSI	mm - inch										Ch.	PESO APPROX / APPROX WEIGHT kg-lbt	RAPPORTO DI PILOTAGGIO / PILOT RATIO
				B	C	D	E	F	G	H	I	L	M			
VRSD140T8	BSPP 1/4	10 (2.6)	350 (5075)	30 (1.18)	40 (1.57)	63 (2.48)	12,5 (0.49)	28 (1.10)	30 (1.18)	6,5 (0.26)	33 (1.30)	119 (4.69)	8 (0.31)	17	0,62 (1.36)	1:9
VRSD140		32 (1.26)						127 (5)				12 (0.47)	22	0,63 (1.37)		
VRSD380	BSPP 3/8	35 (9.2)		35 (1.38)	50 (1.97)	82 (3.23)	16,5 (0.65)	33,5 (1.32)	36 (1.42)		35 (1.38)	149 (5.87)	15 (0.59)	27	1,10 (2.42)	
VRSD120	BSPP 1/2	45 (11.9)		35 (1.38)	50 (1.97)	82 (3.23)	16,5 (0.65)	33,5 (1.32)	36 (1.42)		35 (1.38)	149 (5.87)	15 (0.59)	27	1,10 (2.42)	