



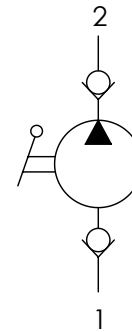
**CODICE ORDINAZIONE**  
ORDERING CODE

01

**PME10**

01	POMPE A MANO (CARTRIDGE HAND PUMPS)	PME10
----	--	-------

**SCHEMA IDRAULICO / HYDRAULIC CIRCUIT**



LA POMPA VIENE FORNITA CON LEVA DI AZIONAMENTO L=500 mm  
THE PUMP IS SUPPLIED WITH ACTING LEVER 19,6 inch LENGHT

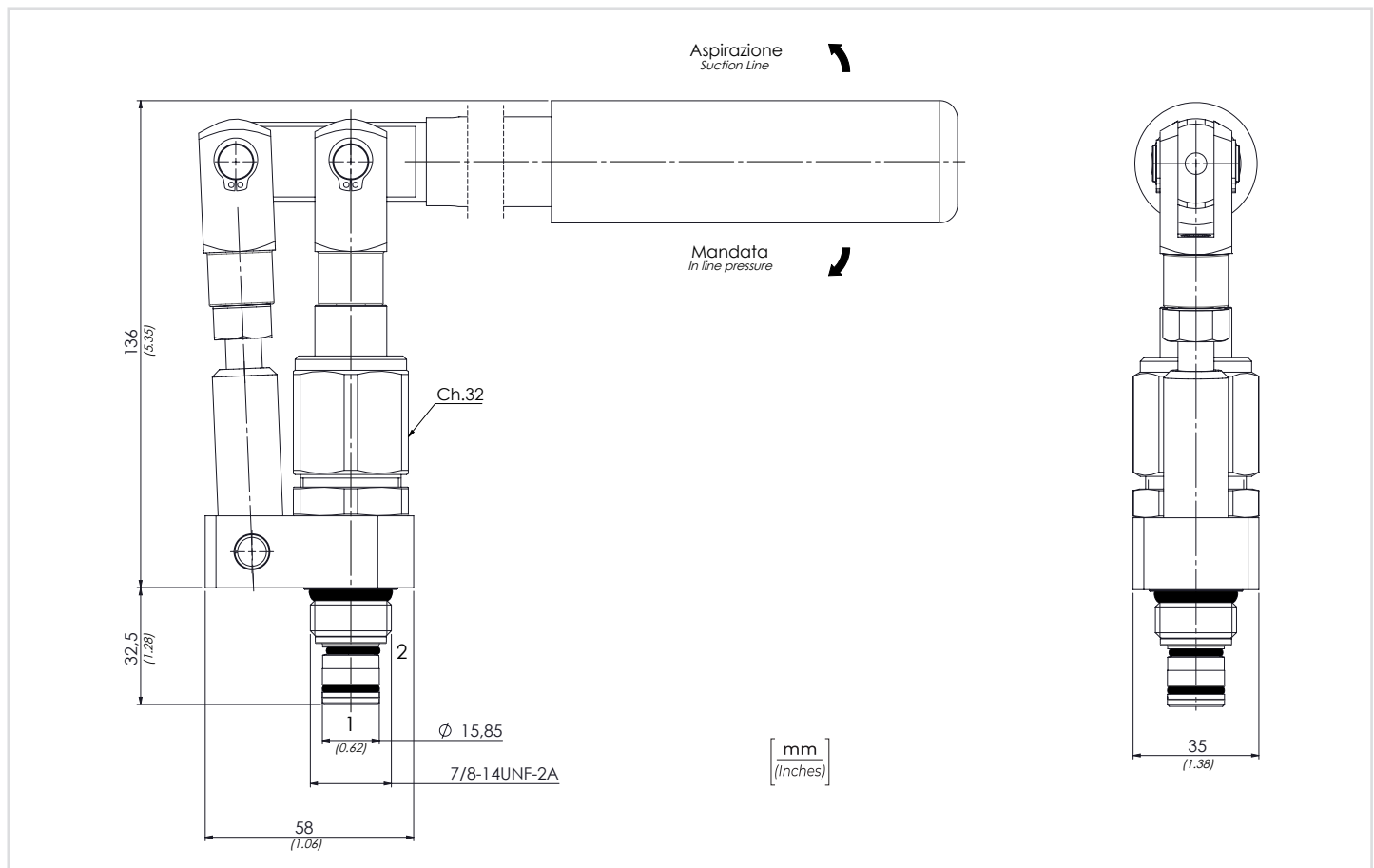
**DATI TECNICI / TECHNICAL DATA**

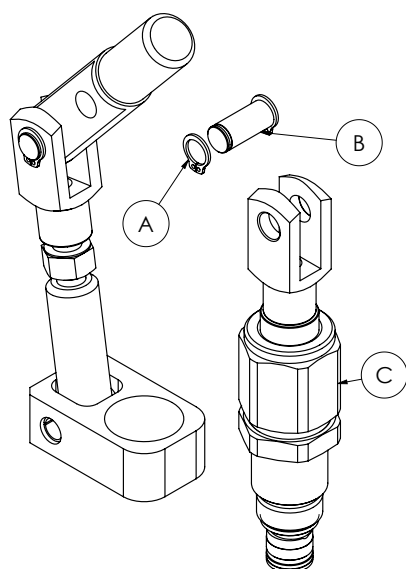
Olio idraulico - Mineral oil	ISO 6743/4 (DIN 51524)
Viscosità olio - Oil viscosity	15-250 mm <sup>2</sup> /s (15 to 250 cSt)
Classe di contaminazione max Max contamination index	ISO 4406:1999 Classe 19/17/14
Temperatura dell'olio - Oil temperature	-20°C +80°C -4°F +176°F
Temperatura ambiente - Environment temperature	-20°C +50°C -4°F +122°F

È indispensabile l'utilizzo di un filtro per proteggere la valvola (filtrazione consigliata 15 µm)  
It is necessary a filter use to protect the valve (advised filtration 15 µm)

**CARATTERISTICHE TECNICHE / TECHNICAL CHARACTERISTICS**

TIPO TYPE	CILINDRATA (cm <sup>3</sup> ) DISPLACEMENT (in <sup>3</sup> )	PRESSIONE MAX MAX PRESSURE bar-PSI	PESO APPROX APPROX WEIGHT kg-lbt	COPPIA DI SERRAGGIO TIGHTENING TORQUE Nm-lbt ft	CAVITÀ CAVITY
PME10	10 (0.6)	200 (2900)	1,9 (4.20)	41-47 (30-35)	SAE10/2

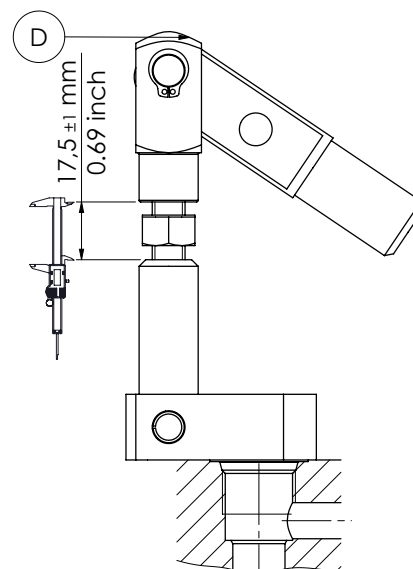




**1**

Smontare l'anello di arresto (A), sfilare la spina (B), togliere la valvola (C).

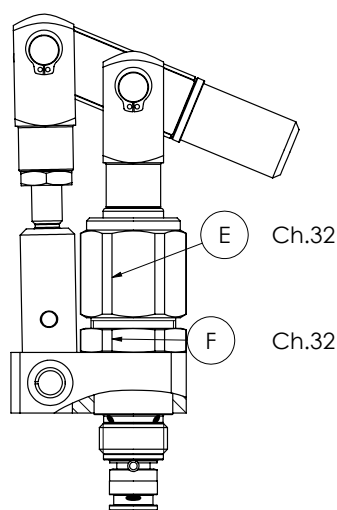
Disassemble the snap ring (A), get out the pin (B), remove the valve (C).



**2**

Posizionare la forcina (D) alla misura indicata; avvicinare il leverismo alla cavità della valvola.

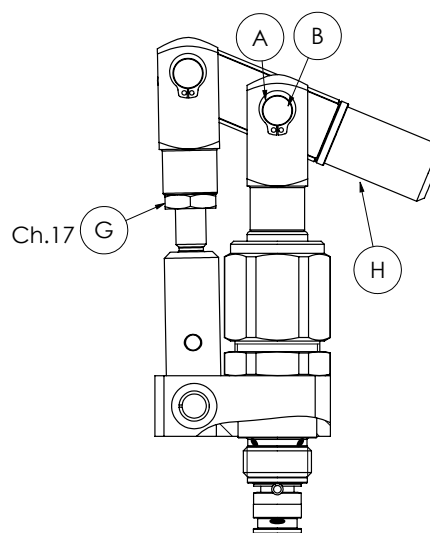
Position the fork (D) at shown dimension; put the levering kit close to the valve cavity.



**3**

Avvitare la cartuccia (E) nella cavità (41-47 Nm); stringere la ghiera (F)(41-47 Nm).

Screw the cartridge (E) in the cavity (30-35 lbf<sub>t</sub>); tighten the lock nut (F)(30-35 lbf<sub>t</sub>).



**4**

Posizionare la leva (H) verso il basso; montare la spina (B) e l'anello di arresto (A); serrare il dado (G) (33-53 Nm).

Place the lever (H) downward; assemble the pin (B) and the snap ring (A); tighten the nut (G) (45-72 lbf<sub>t</sub>).