

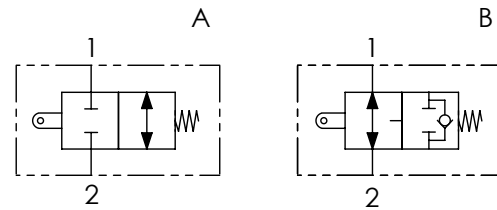


CODICE ORDINAZIONE
ORDERING CODE

	01	02	03
	FCT		

01	VALVOLE DI FINE CORSA A TRAZIONE (TUG END - STROKE VALVES)	FCT
02	DIMENSIONE (SIZE)	BSPP 3/8
		BSPP 1/2
		BSPP 3/4
		BSPP 1
03	SCHEMA (CIRCUIT)	Centro chiuso (Closed centre)
		Centro aperto (Open centre)

SCHEMA IDRAULICO / HYDRAULIC CIRCUIT



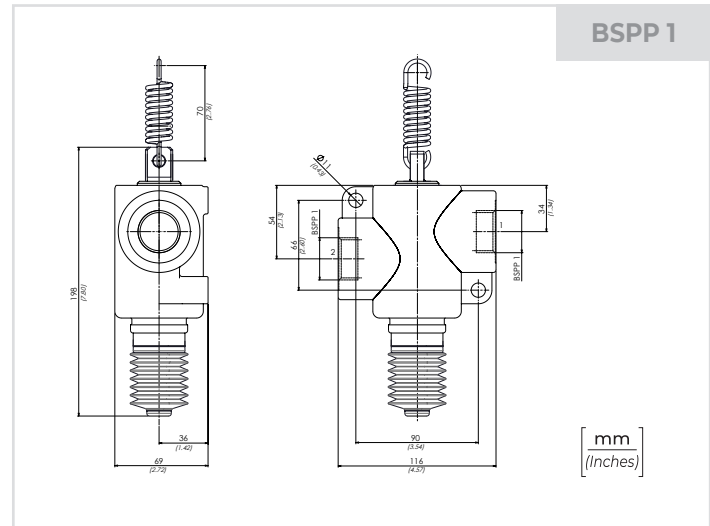
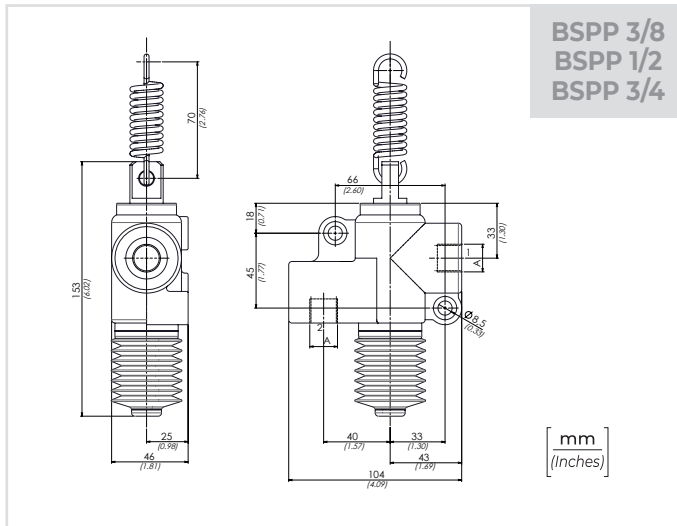
CARATTERISTICHE TECNICHE / TECHNICAL CHARACTERISTICS

TIPO TYPE	A	PORTATA MAX MAX FLOW l/min-USgpm	PRESSIONE MAX MAX PRESSURE bar-PSI	PESO APPROX APPROX WEIGHT kg-lbt
380	BSPP 3/8	60 (15.8)	250 (3625)	1,7 (3.7)
120	BSPP 1/2	80 (21.1)		1,8 (4)
340	BSPP 3/4	100 (26.4)		1,9 (4.1)
100	BSPP 1	140 (37)	200 (2900)	2,5 (5.5)

DATI TECNICI / TECHNICAL DATA

Olio idraulico - Mineral oil	ISO 6743/4 (DIN 51524)
Viscosità olio - Oil viscosity	15-250 mm ² /s (15 to 250 cSt)
Classe di contaminazione max Max contamination index	ISO 4406:1999 Classe 19/17/14
Temperatura dell'olio - Oil temperature	-20°C +80°C -4°F +176°F
Temperatura ambiente - Environment temperature	-20°C +50°C -4°F +122°F

È indispensabile l'utilizzo di un filtro per proteggere la valvola (filtrazione consigliata 15 µm)
It is necessary a filter use to protect the valve (advised filtration 15 µm)



PERFORMANCES

