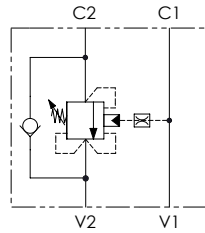
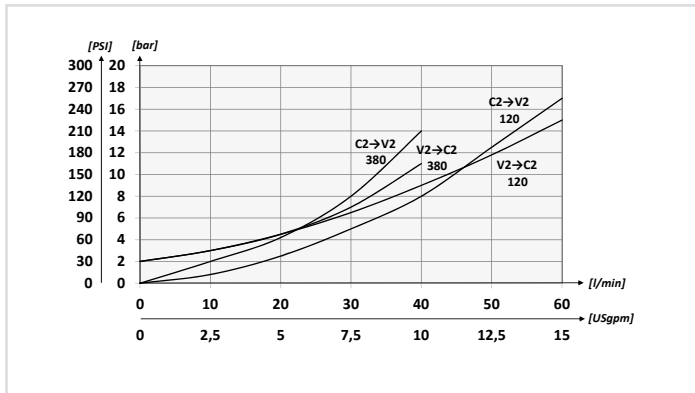


### SCHEMA IDRAULICO / HYDRAULIC CIRCUIT



### PERFORMANCES



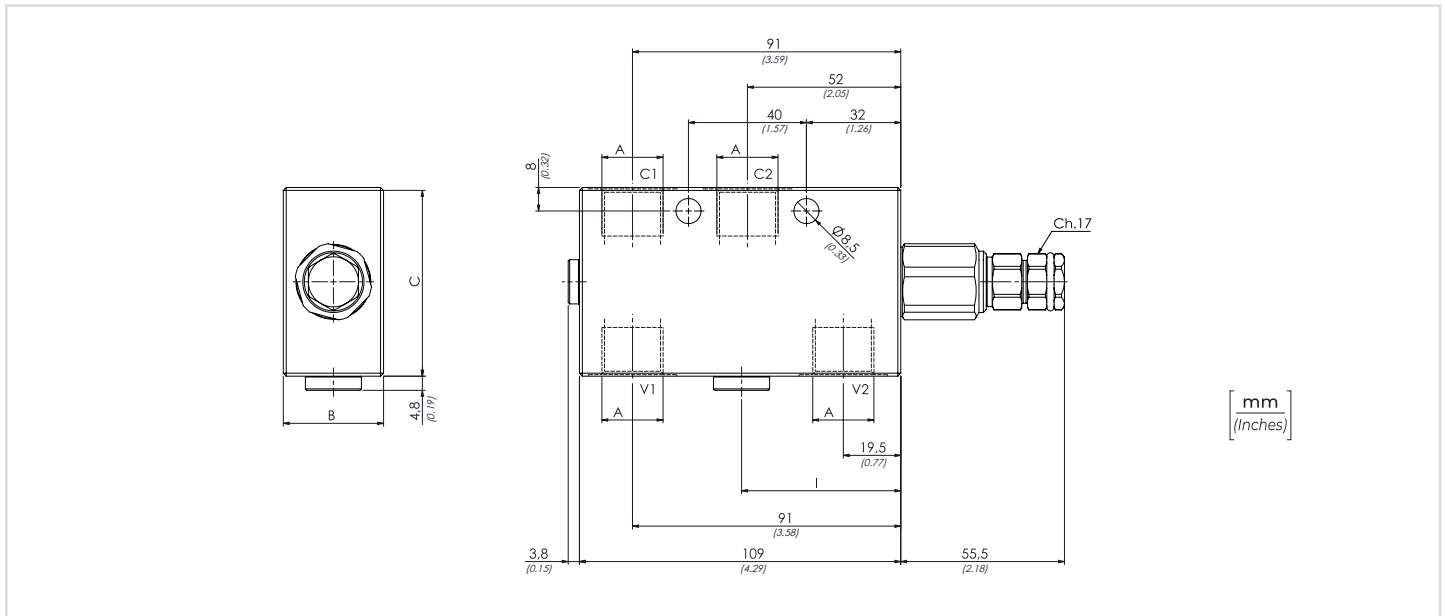
### CODICE ORDINAZIONE / ORDERING CODE

01	02	03	04	05
<b>VCLP</b>			<b>S</b>	

<b>01</b>	VALVOLE DI BILANCIAMENTO SINGOLE PER CENTRO CHIUSO (SINGLE COUNTERBALANCE VALVES FOR CLSOED CENTER)			<b>VCLP</b>	
<b>02</b>	DIMENSIONE (SIZE)	BSPP 3/8		<b>380</b>	
		BSPP 1/2		<b>120</b>	
<b>03</b>	MOLLA 30/210 BAR (SPRING 435/3045 PSI)	Rp 1:4.25	<b>78 bar/al giro</b> (1131 PSI/turn)	Taratura standard (Std. setting) <b>Q=5 l/min 200 bar</b> (2900 PSI)	<b>1</b>
		Rp 1:8.75	<b>160 bar/al giro</b> (2320 PSI/turn)		
	MOLLA 60/350 BAR (SPRING 870/5075 PSI)	Rp 1:4.25	<b>135 bar/al giro</b> (1958 PSI/turn)	Taratura standard (Std. setting) <b>Q=5 l/min 350 bar</b> (5075 PSI)	<b>2</b>
		Rp 1:8.75	<b>160 bar/al giro</b> (2320 PSI/turn)		
<b>04</b>	MATERIALE (MATERIAL)	Acciaio + zincatura (Steel + zinc-plating)		<b>S</b>	
<b>05</b>	RAPPORTO DI PILOTAGGIO (PILOT RATIO)	1:4.25 Standard		<b>/</b>	
		1:8.75		<b>8</b>	

### DATI TECNICI / TECHNICAL DATA

Oilio idraulico - Mineral oil	ISO 6743/4 (DIN 51524)
Viscosità olio - Oil viscosity	15-250 mm <sup>2</sup> /s (15 to 250 cSt)
Classe di contaminazione max / Max contamination index	ISO 4406:1999 Classe 19/17/14
Temperatura dell'olio - Oil temperature	-20°C +80°C -4°F +176°F
Temperatura ambiente - Environment temperature	-20°C +50°C -4°F +122°F
È indispensabile l'utilizzo di un filtro per proteggere la valvola (filtrazione consigliata 15 µm) It is necessary a filter use to protect the valve (advised filtration 15 µm)	



### CARATTERISTICHE TECNICHE / TECHNICAL CHARACTERISTICS

TIPO / TYPE	A	PORTATA MAX (l/min) / MAX FLOW (USgpm)	PRESSIONE MAX (bar) / MAX PRESSURE (PSI)	B	C	I	M	PESO APPROX (kg) / APPROX WEIGHT (lb)
VCLP380	BSPP 3/8	40 (10.6)	350 (5075)	29 (1.14)	54 (2.13)	/	/	1,21 (2.63)
VCLP120	BSPP 1/2	60 (15.9)		34 (1.34)	64 (2.52)	54 (2.13)	BSPP 1/4	1,59 (3.46)